



صنایع پزشکی

سرما بهبود

سپنتا

SBS Medical Ind.



دانش بنیان

Knowledge Enterprise



**SARMA**  
Cooling Cap  
تارا  
کلاه سرد کننده

## Model : SBChemoPlus

Scalp cooling device to avoid or reduce chemotherapy induced alopecia



**IMED**  
National Medical  
Device Directorate IR, IRAN



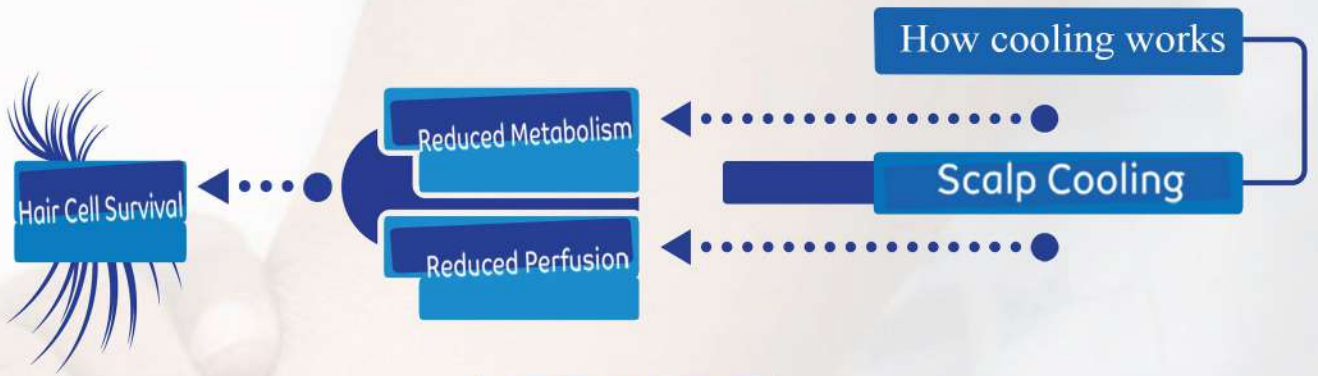
Sarma Behboud Sepanta Medical Industries  
Mashhad Health Science and Technology Park,  
Bu-Ali Square, Mashhad, Iran

+98 51-35015023 +98 915 098 9047 [www.sbmed.ir](http://www.sbmed.ir)

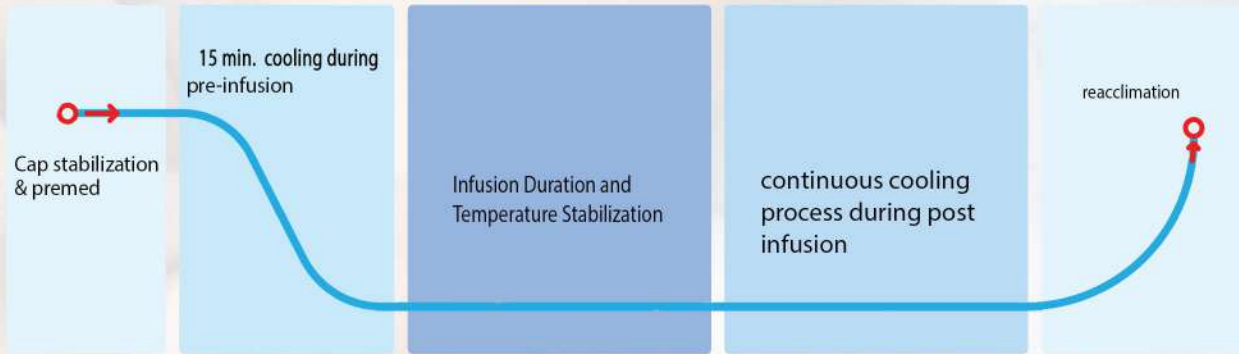
[info@sbmed.ir](mailto:info@sbmed.ir)

[sbmed.ir](http://sbmed.ir)

[sbmed.ir](http://sbmed.ir)



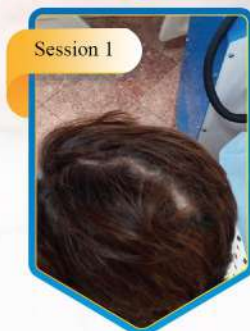
### Cooling Cap Timeline



### Recommended post-infusion times

AC	2.5 hours	Paclitaxel (weekly)	1 hour
Docetaxel	45 min	Paclitaxel (3 weekly)	1.5 hours
ECF	2 hours	BEP	2 hours

### Successful cases with AC-T regimen



## Technical Specifications

Model : **SBCheMoPlus**

### Dimensions

Regarding the wheels **110 50 50 CM**

Weight **80 kg**

Power source **220 volt - 50 hz**

Power consumption **1300 watt**

Temperature accuracy **± 0.1°C**

Reserve coolant tank **1.5 lit** Main coolant tank **3.5 lit**



### Sensors

- Fluid level sensor in main and reserve tanks
- Fluid flow sensor in hoses
- Main tank coolant temperature sensor

### Non-spill quick couplings

- CDC couplings

### Coolant fittings

- Anti rust brass fittings

### Cap insulation cover

- Two pieces of neoprene
- BOA Fit System

### Structure

- Metal structure with a double-layer heat treated paint

### User Interface

- 7-Inch touch screen

### Heat exchanger

- Danfoss brazed plate

### Head wraps

- Two polymer wraps of same size

### Cooling system

- Hermetic compressor with R404 / R134 refrigerant

### Coolant

- Antifreeze fluid based on water and propylene glycol

### Permissible environmental conditions

- Allowable temperature 18-26°C
- Allowable humidity 30%-70%
- Maximum allowable height 2200 m above sea level

